



Allen & Heath M-Waves Quick Setup Guide

Registration

You must register your Allen & Heath M-Waves card to obtain the software, the drivers and any licenses needed.

To register your device, log into your Waves account at www.waves.com.

Software Download

Go to Waves.com > Downloads > [Hardware Drivers](#), and select Allen & Heath M-Waves.

Download the latest version for Mac or PC, as needed.

Run the installer and follow the onscreen instructions.

Connections

Insert the M-Waves to your Allen & Heath stage box.

Connect the Allen & Heath M-Waves card to your computer.

If you are using just one M-Waves card, connect it directly to your computer's Gigabit Ethernet port using the supplied cable.

If you are using several M-Waves cards and/or multiple SoundGrid interfaces, computers, etc., connect them all to a SoundGrid-compatible switch and connect the switch to your computer's Ethernet port.

See <http://www.waves.com/hardware/soundgrid-switches> for a list of approved switches.

Recording/Playback

Your Waves SoundGrid application (SoundGrid Studio or MultiRack SoundGrid) must be open at all times to configure the driver.

After installation, the Waves SoundGrid driver will appear as available in your DAW even before you launch the Waves SoundGrid application.

1. Recording/Playback with the SoundGrid Studio Application

If you choose to use the SoundGrid Studio Application as your setup application, refer to the following images for configuration.

The first time you run and configure your M-Waves card, you may be prompted to update the firmware of your device. Follow the onscreen instructions.

The screenshot shows the Waves SoundGrid Studio application window. The interface includes a top bar with 'WSG SOUNDGRID STUDIO', 'Untitled*', 'Save/Load', and tabs for 'MIXER', 'PATCH', and 'SETUP'. The 'SETUP' tab is active, showing system settings. On the left, a sidebar contains 'SYSTEM INVENTORY', 'SETTINGS', and 'SESSION INFO'. The main area is divided into sections: 'SYSTEM' (SoundGrid Studio), 'WSG PROCESSING' (WSG BUFFER: 40 SAMPLES, 0.8 MS), 'SAMPLE RATE' (SLAVE, 48000 Hz), 'NETWORK PORT' (LAN: en0 - 57762-A0 - 00:30:1b:3e:3d:4b), and 'DEVICE RACKS'. The 'DEVICE RACKS' section is divided into four columns: 'RACK A - HARDWARE I/O DEVICES', 'RACK B - SOFTWARE I/O DEVICES', 'SERVERS', and 'CONTROL'. Red and green boxes highlight specific areas with annotations: a red box around the 'SETTINGS' tab is labeled 'Access buffer settings'; a red box around the 'NETWORK PORT' section is labeled 'Select your computer Ethernet Port'; a red box around the 'RACK A' section is labeled 'Connected M-Waves Devices appear in Rack A'; a green box around the gear icon in the 'RACK A' section is labeled 'Click the gear symbol to access the M-Waves control panel'; a red box around the 'RACK B' section is labeled 'Select the number of driver channels for your DAW'.

Access buffer settings

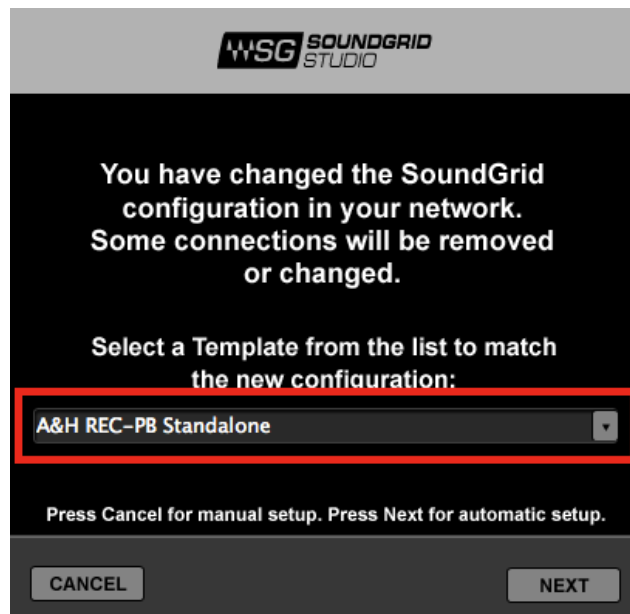
Connected M-Waves Devices appear in Rack A

Click the gear symbol to access the M-Waves control panel

Select your computer Ethernet Port

Select the number of driver channels for your DAW

There are also built-in templates to assist you with configuration. Select the template that best meets your setup. For recording and playback, select **A&H REC-PB Standalone**.



Finally, check in the PATCH tab that your M-Waves card is patched to the driver. If you've selected one of the preset templates, this should be all done. If you've adjusted the number of driver channels, you may need to patch additional channels.

2. Recording/Playback with MultiRack SoundGrid

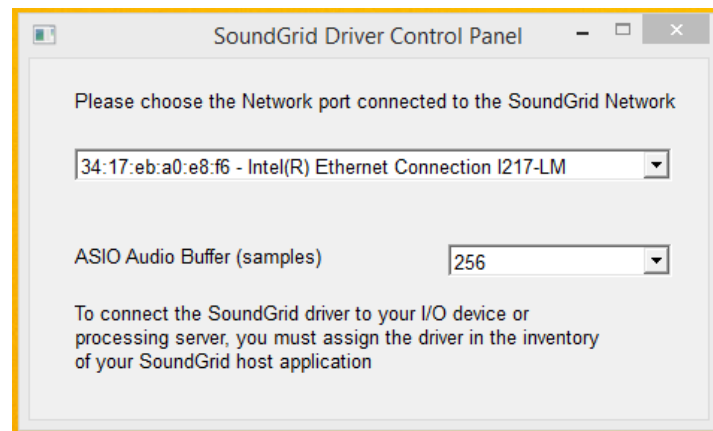
(a) Open the SoundGrid Driver control panel here:

Mac: System HD /Applications/Waves/SoundGrid

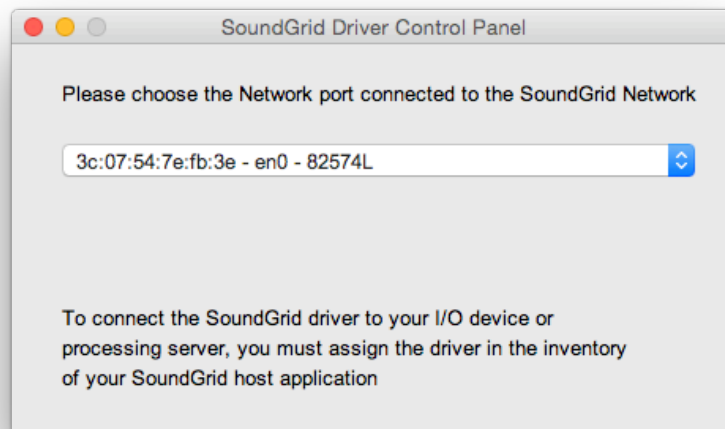
Windows: C:\Program Files\WavesSoundGridDriver

(b) Select the computer network port that is connected to the SoundGrid network.

Windows users – this is also where you can change the ASIO buffer size.



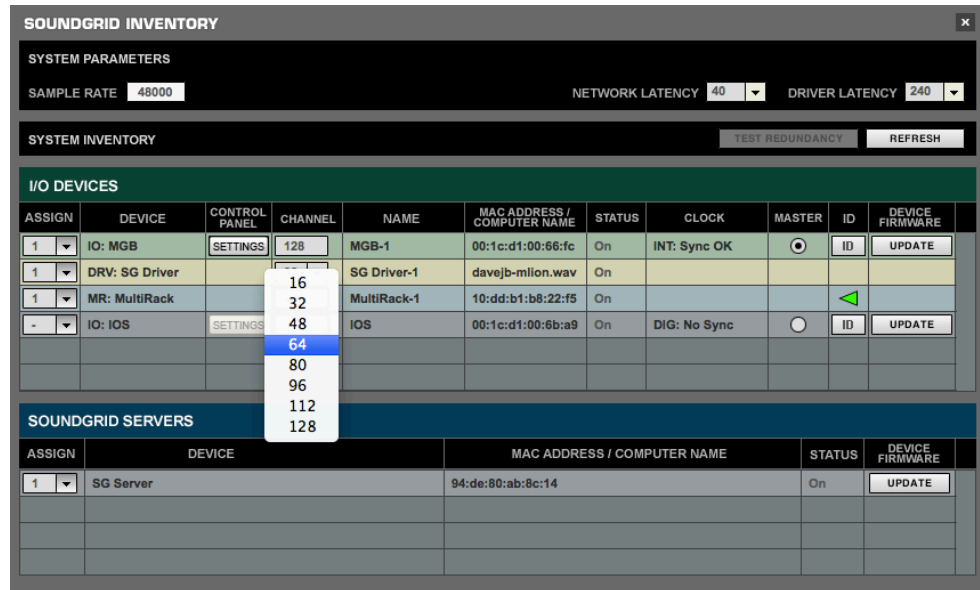
Windows – SoundGrid ASIO Driver Control Panel



Mac – SoundGrid Core Audio Driver Control Panel

(c) Launch MultiRack SoundGrid.

(d) Open the SOUNDGRID INVENTORY window (press F2 or open from the Audio > SoundGrid Inventory menu).



(e) Launch your DAW and set audio device to Waves SoundGrid Driver.

